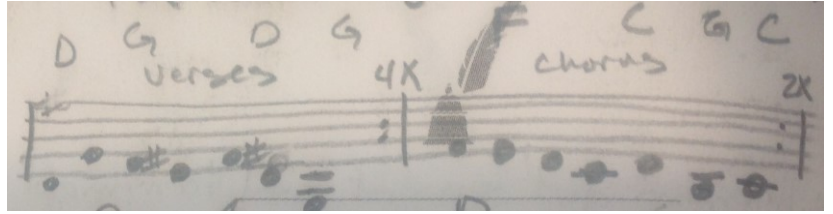


008_The_Fallen_Angel

HRN 25 December 1998
0 Fret Travis pick



1. D G D G
My angel fell off the Christmas tree
 D G D G
She was perched precariously
 D G D G
I didn't realize, I didn't see
 D G D G
And I bumped the Christmas tree
- C. F C G C
Life's road has many bumps
 F C G D
We succeed if we take the lumps
2. D G D G
Two day's travel from far away
 D G D G
Glad to see the kids, little to say
 D G D G
Asked if she'd change her mind this Christmas day
 D G D G
No's the answer, and so it seems it will stay
3. D G D G
Three years of pain and disharmony
 D G D G
Selfish choices by you and me
 D G D G
Pain and anger for all to see
 D G D G
Unhappy consequences, a lost key
4. D G D G
Four decades left to recall the pain
 D G D G
Every time that I hear your name
 D G D G
Choices made, such a shame
 D G D G
Life goes on, it's still the same
5. D G D G
Fifty years and starting over
 D G D G
Such a waste to not enjoy the clover
 D G D G
Take my hand and we'll go to Dover
 D G D G
And explore the outback in a Land Rover